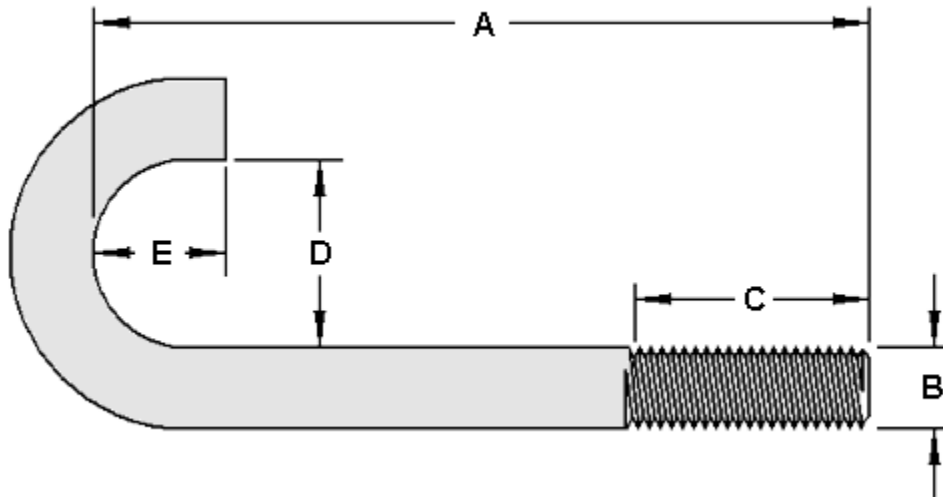




## J-Bolt Measurement Sheet

Please confirm the specifications on the following part:



### Specifications:

A: " (overall length)

B: " (diameter and thread pitch)

C: " (length of thread)

D: " (distance between legs)

E: " (length of short leg)

Material: (Steel or Stainless Steel)

Finish: (Zinc Plated, Galv, etc)